



### GENERAL DESCRIPTION.

Manufacturer:	McDonnell Douglas	Serial Number:	<b>49XXX</b>
Type/Model:	MD-83	Fuselage Number:	<b>1316</b>
Type Certificate:	A6WE	Registration:	<b>new</b>
Detailed Specification:		Total Aircraft Hours:	<b>39130</b>
Date of Manufacture:	1986	Total Aircraft Cycles:	<b>28862</b>
Noise Certificate:	ICAO Annex 16, Vol I, Part II, Chapter 3 and JAR-36 Subpart B		

### WEIGHTS.

Maximum Takeoff Weight	160.000 lb	72.575 kg
Maximum Landing Weight	150.000 lb	68.039 kg
Maximum Zero Fuel Weight	122.000 lb	55.338 kg
Maximum Ramp Weight	161.000 lb	73.028 kg
Empty Weight	83.010,6 lb	37.732 kg
Usable Fuel Capacity	5.840 U.S.g	22.106 l
0.803 kg/liter	39.128 lb	17.785 kg

### INTERIOR CONFIGURATION.

Seating:	12C/141Y (168Y possible)
Seats:	PTC
Galleys:	4ea, Fwd: G1, G2 Aft: G3, G4, G5
Lavatories:	3ea, Fwd: L1, Aft: L2, L3

## MAINTENANCE STATUS.

Last Checks:	Check	Date	FH	Cycles
	<b>C1</b>	12.09.2006	39050	28824
	<b>I</b>	15.6.2005	39044	28822
	<b>D</b>	15.6.2005	39044	28822

<b>Maintenance Intervals:</b>	<b>PFC / Daily</b>	every landing / Daily
	<b>A-check</b>	450 fh
	<b>C-check</b>	3600 fh / 15 months
	<b>I-check</b>	5 years
	<b>D-check</b>	10 years

## ENGINES

Manufacturer: Pratt & Whitney  
Engine Model: JT8D-219  
Maintenance Concept: On Condition

<b>S/N: 716774</b> (# 1 Position).	<b>S/N: 716775</b> (# 2 Position).
TSN: 33110 CSN: 23292	TSN: 32831 CSN: 22400
TSLV: 976 CSLV: 768	TSLV: 778 CSLV: 668

## APU.

Manufacturer: Allied Signal (Garret)  
Model: GTCP85-98DHF  
Maintenance Concept: HSI every 2,500 FH.  
**P/N** 381276-1 **S/N** P-569  
**TSO** not tracked **TSLV** 42  
Detailed Information: See aircraft component status list

## LANDING GEAR.

Overhaul Limits: Main Gears 20,000 c / 10 years  
Nose Gears 16,500 c / 8 years

### Nose Gear

**P/N 5910447-5067, S/N CPI 1752A**

**DSL** 22.3.2002  
**CSL** 4008

### MLG L/H

**P/N 5930999-5501, S/N 4230**

**DSL** 29.11.2004  
**CSL** 39

### MLG R/H

**P/N 5930999-5502, S/N 4227**

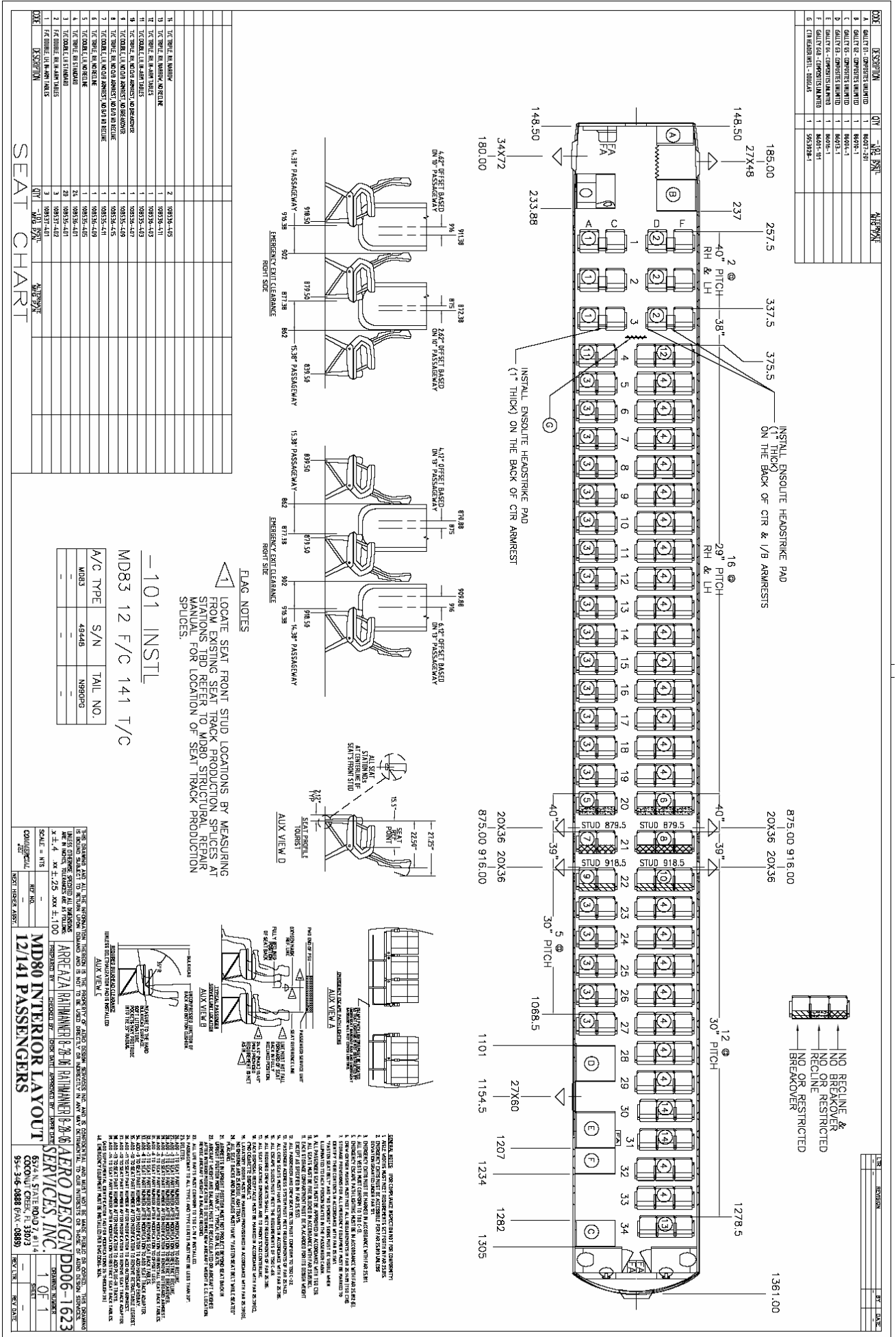
**DSL** 2.12.2004  
**CSL** 39

**Avionics :**

Item Number	Nomenclature	Manufacturer	Model Number	Manufacturers Part Number	Serial Number	Remark
1	Radar Drive Unit	Bendix	DAA-4A	2041444-0403	2336	Nose
2	Radar Transciever	Bendix	RTA 4A	2041217-0414	2716	Fwd E&E
3	# 1 VHF Comm	Allied Signal		064-5001-0101	1829	E&E
4	# 2 VHF Comm	Allied Signal		064-5001-0101	2098	E&E
5	Symbol Generator # 2	Honeywell		4055900-905	90111281	E&E
6	VHF Nav # 2	Collins		622-3257-001	7157	E&E
7	Araul Warning	Central Aural Warning System		HO5A0035-4	439	E&E
8	ADF # 1	Bendix		2041168-7501	2562	E&E
9	ADF # 2	Bendix		2041168-7501	1510	E&E
10	NPU # 2	Honeywell		81840-00-514	97110984	E&E
11	Marker Beacon	Bendix		2087821-2811	3839	E&E
12	Entertainment Repro Tape	Matsushita		RD-AX7002-01	100298	E&E
13	DTGCS-2	Honeywell		403424971	87071372	E&E
14	P/A Amplifier	Collins		622-4096-001	4044	E&E
15	Air Data Comp 2	Honeywell		HG280080	1221	E&E
16	Selcal	Motorola		N1335B	255AMY0007	E&E
17	Stall Warning Computer 2	Sundstrand		955-0449-002	1400	E&E
18	Main Multiplexer	Matsushita				
19	Stall Warning Computer 1	Sundstrand		955-0049-002	1400	E&E
20	Cabin Pressure Controller 1	Allied Signal		2117180-2	75-811	E&E
21	Cabin Pressure Controller 2	Allied Signal		2117180-2	75-779	E&E
22	Warning/Caution Controller	Teledyne			1435	E&E

23	Proximity Switch Control	Eldec Corp		8-336-05 MOD A	710	E&E
24	Auto Brake Computer	Crane		42-809-2	421	E&E
25	Anti-Skid Controller	Crane		42-607-1	112	E&E
26	HF # 1 Transmitter	Collins		622-3371-001	6603	E&E
27	Rcvr/Xmtr Adapter	Collins		622-3856-001	2179	E&E
28	HF # 2 Transmitter	Collins		622-3371-001	8479	E&E
29	Rcvr/Xmtr Adapter	Collins		622-3856-001	2008	E&E
30	FDAU	Hamilton Standard		ED742851-0	80161928	E&E
31	NPU # 1	Honeywell		81840-00-005H	97110991	E&E
32	ATC # 2	Collins	TPR-901	822-1338-003	7BGF	E&E
33	ATC # 1	Collins	TPR-901	822-1338-003	1994L	E&E
34	DME # 1	Collins		622-1921-001	12573	E&E
35	DME # 2	Collins		622-1921-001	6904	E&E
36	Symbol Generator # 1	Honeywell		4055900-905	89050883	E&E
37	VHF NAV # 1	Collins		822-0760-002	5214	E&E
38	Auto Spoiler Switching	McDonnell Douglas		5935212-501	344	E&E
39	TCAS	Collins		622-8971-022	9167	E&E
40	Compass Rack	Sperry		614937-10	85114929A	E&E
41	Air Data Comp 1	Honeywell		HG280D80	1219	E&E
42	Windshear	Honeywell		4059845-911	92060921	E&E
43	DFGCS 1	Honeywell		4034241-971	87071372	E&E
44	Performance Computer	Delco Systems		7892551-011-010	01-00551	E&E
45	TAWS Computer	Universal Avionics		3010-00-00	1241	E&E
46	Air Data Computer Switch Unit	Butler National		001648-101	1101	E&E

# Seat Layout Plan:

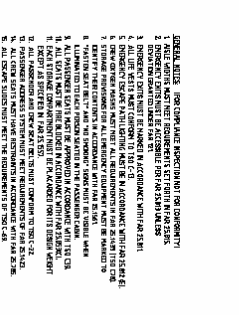
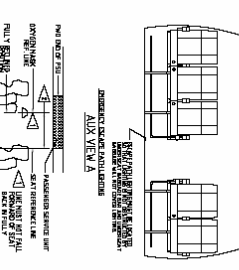
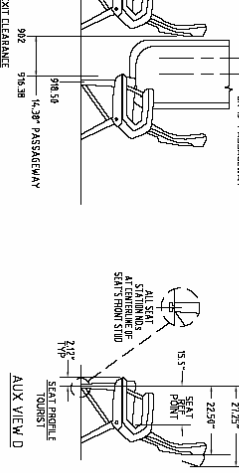


SEAT CHART

MD83 12 F/C 141 T/C

A/C TYPE	S/N	TAIL NO.
MD83	49448	N980PG

**FLAG NOTES**  
 ▲ LOCATE SEAT FRONT STUD LOCATIONS BY MEASURING FROM EXISTING SEAT TRACK PRODUCTION SPLICES AT STATIONS TED REFER TO MD80 STRUCTURAL REPAIR MANUAL FOR LOCATION OF SEAT TRACK PRODUCTION SPLICES.



**MD80 INTERIOR LAYOUT 12/141 PASSENGERS**

DATE: 01 OF 1  
 5574 N. STATE RD. #114  
 COCONINO COUNTY, AZ 86001  
 928-288-8888 FAX: 928-288-8889